



W
WHITES

5 Ventry Close, Salisbury, Wiltshire, SP1 3ES

£595 PCM

About The Property

- Well presented
- Double room
- All Bills Included
- Monday to Friday Only
- En Suite bathroom
- Popular location



1



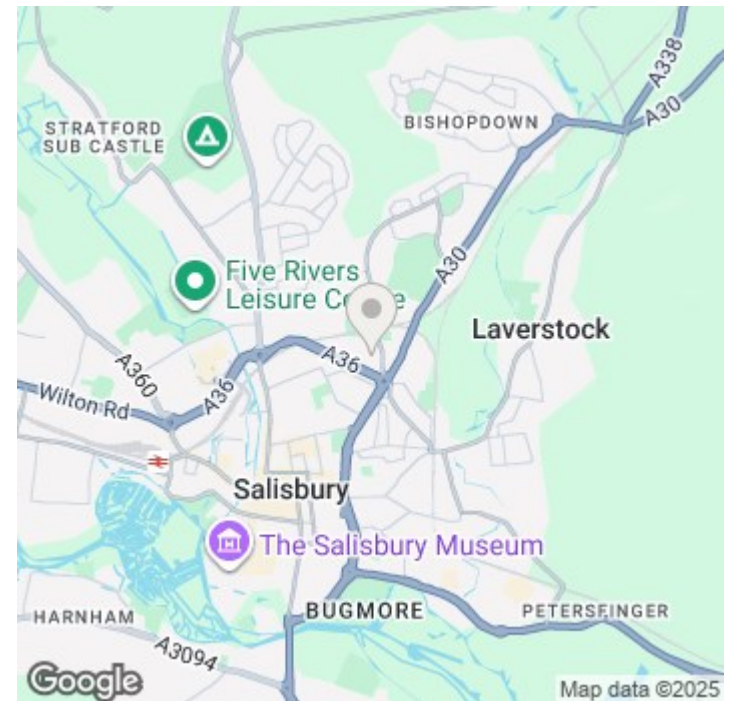
0



0



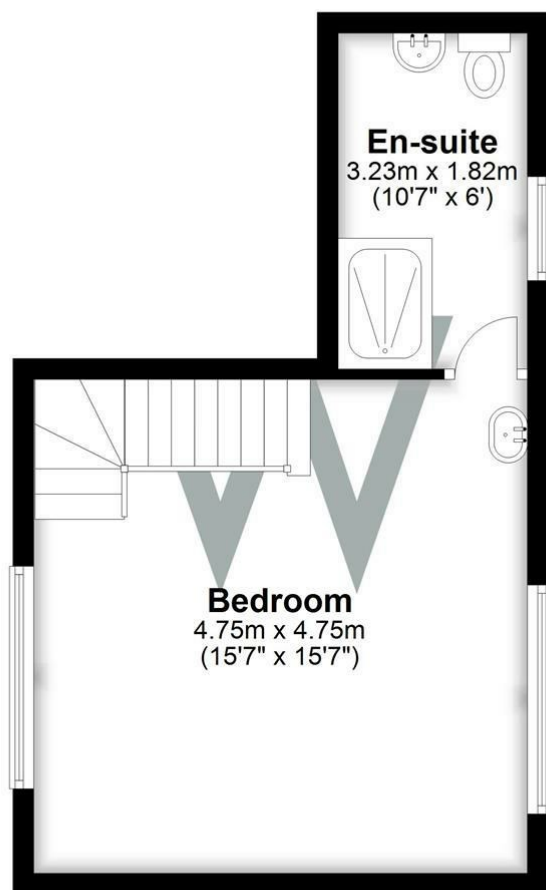
308.00 sq ft





Ground Floor

Approx. 28.6 sq. metres (308.3 sq. feet)



Total area: approx. 28.6 sq. metres (308.3 sq. feet)

Further Information

Let available date: 8th July 2025 NB:
This date is provisional and will only
be confirmed once referencing has
been successfully completed.

Property type: Annex

Furnish type: Furnished

Deposit: £685

Local authority:

Council Tax: Band

EPC: (null)

Energy Efficiency Rating

	Current	Potential
Very energy efficient - lower running costs		
(92 plus) A		
(81-91) B		
(69-80) C		
(55-68) D		
(39-54) E		
(21-38) F		
(1-20) G		
Not energy efficient - higher running costs		
England & Wales	EU Directive 2002/91/EC	